



K A D M E

# Whereoil Enterprise

## The Search Engine for Oil & Gas

### Features at a glance

- Search engine specifically designed for the Oil & Gas industry
- Covers both structured and unstructured data sources, internal and external
- Integrates with Active Directories
- Serves as a management system for all your interpretation projects
- Automatically create spatial data from many data sources
- Easily integrates with existing GIS web portals
- Preview PDF, TIFF, SEG Y, LAS and many other file formats without downloading the files
- Multilingual user interface (including English, Norwegian, Spanish and Russian)

### Currently supported data sources

#### Files on network shares

- PDF, MS Office, SEG Y headers, LAS and many more

#### Document Management systems

- OpenText Livelihood
- Bentley ProjectWise

#### Application data

- Petrel™
- Kingdom™
- Petrobank™
- Geoframe™
- OpenWorks™/SeisWorks™ via OpenSpirit™
- OpenWells™
- Finder™
- LogDB™
- SeisDB™
- AssetDB™
- Any OpenSpirit™ enabled data store (R2003 R5000)

#### External data sources

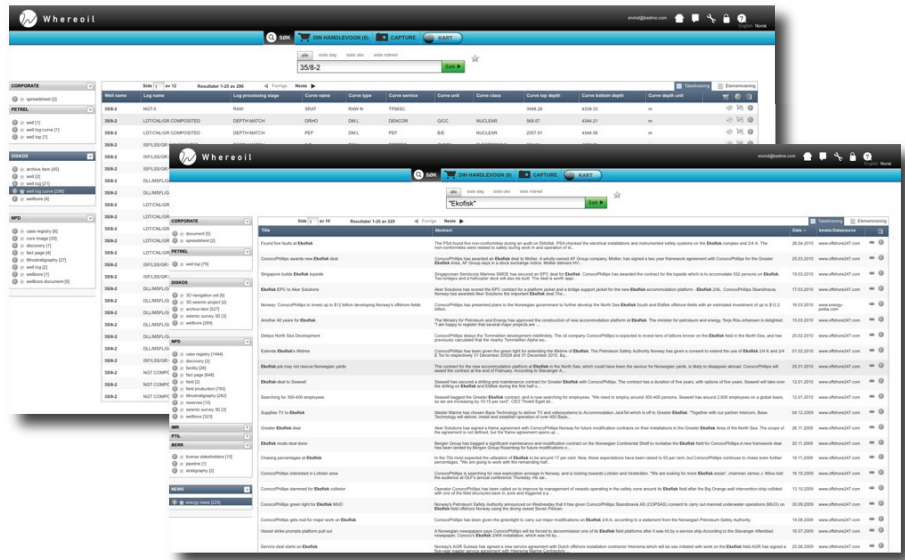
- DISKOS™
- LicenseWeb™
- ArcticWeb™
- IHS Enerdeq® Web Services
- A vast selection of public data sources in Norway, UK, Denmark (NPD, DEAL, DECC, GEUS)
- A selection of news websites (Offshore247, Energi-pedia, etc.)

### Do you have control over enterprise information?

Over the years energy companies have accumulated a vast variety of highly diverse data, from corporate databases to document management systems and file shares. In addition they have connected to National Data Repositories, hosted digital and physical archives off-site and purchased data subscriptions. Various attempts by several companies have been made to bring this information together, mostly resulting in complex systems for a few “super-users” and multi-year, multi-million Euro projects. Despite these investments, when decisions are being made, the available information is still incomplete, incorrect, sanitised, absent. And we all know the cost of that.

### A Knowledge Hub: all of your information in one place

In Whereoil Enterprise, structured information from your internal databases, G&G applications including Petrel and Kingdom, AND unstructured information from your network folders and document management systems are all presented together so you don't miss a thing. Whereoil Enterprise also extracts vast amount of other information used by an oil company that is available on the web or in external data repositories like DISKOS and CDA, collaboration systems like LicenseWeb or in data subscription services and news websites. Users can search and retrieve all the information they need with ONE single search from ONE single application.



### A Search Engine: a tool for the entire company

Whereoil Enterprise is not an application for the data management experts only, but rather a tool for the entire company, allowing personnel to use different functions and workflows depending on the data they are searching for. Data “collections” can be used to submit a request to your data management personnel to archive a few online projects or to load specific surveys into a new project. Support personnel can use Whereoil Enterprise to notify users in case of bad project naming practices. Authorised users can also use this functionality to submit data requests to external systems (e.g. DISKOS, CDA, LicenseWeb) - a huge time saver.

---

## Contact Us

For more information, visit  
[www.kadme.com/whereoil/](http://www.kadme.com/whereoil/)

### Kadme AS

iPark, Prof. Olav Hanssensvei 7a  
P.O. Box 8034  
4068 Stavanger, Norway  
Tel: +47 51 87 4250  
Fax: +47 51 87 4251  
Email: [info@kadme.com](mailto:info@kadme.com)

---

© 2011 KADME AS. All rights reserved. Kadme, Whereoil and the KADME and Whereoil logos are trademarks of KADME AS.

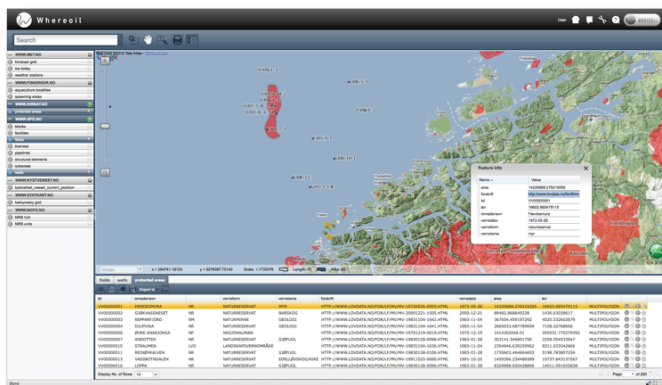
All other company and product names may be trademarks of the respective companies with which they are associated.

KD2010-029.02

## A Web-based GIS: Connect the information to your assets on the map

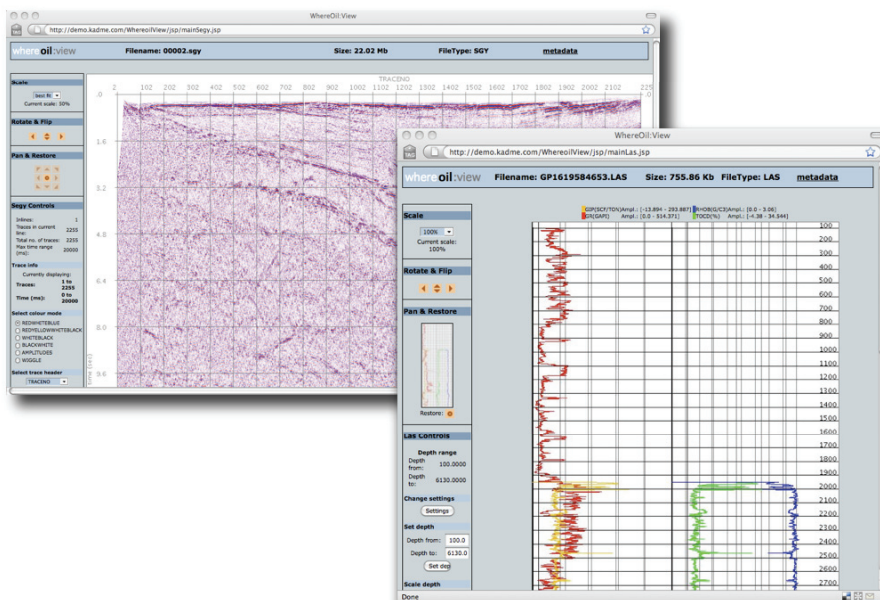
Whereoil Enterprise comes with its own GIS browser and geodatabase, which allows for quick and effective browsing of spatial data. The user can start from the Whereoil search engine and send results to the Whereoil map or vice-versa, starting by browsing a geographical area and then finding information related to the selected spatial objects.

Whereoil Search can easily be integrated with other GIS systems, including ArcGIS Server and Desktop applications, complementing your existing GIS infrastructure with Whereoil's search capabilities.



## A quick look at the data

Data previewing of various formats, including SEGY and LAS is done via a server side image rendering engine. This is an ideal solution for situations where information from flat files of various formats need to be available from remote locations but the files themselves could not be moved for security reasons or channel bandwidth/disk space considerations.



**Kadme** is a leading provider of Information Management software and services to the oil and gas industry. Our vision is to simplify access to data, information and knowledge for all users in any company in the Oil & Gas industry, giving them improved workflows to collaborate in the capture and preservation of knowledge. Whereoil, our flagship product, is an enterprise search engine designed for the Oil & Gas industry, simplifying access to information, structured or unstructured, wherever they are: on your disks, in your interpretation projects, on the public Internet, in the country's National Data Repository.